

CIRCULATION CLEANER HEATING TANK FOR A SPECIAL PRICE!

The Circulation Cleaner heating tank is specially developed to better maintain your Anilox rolls. Cleans your Anilox roll, doctor blade chamber, ink pump and hoses, even during production!!



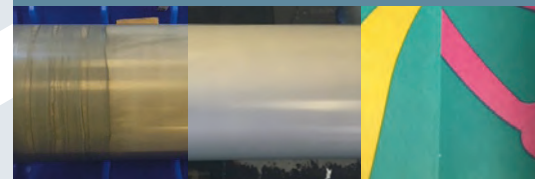
ASK FOR SPECIAL PRICE!

Delivery time: 1-2 weeks after ordering

Package deal contains 2.000 KG BioClean Circulation + 1 heating tank

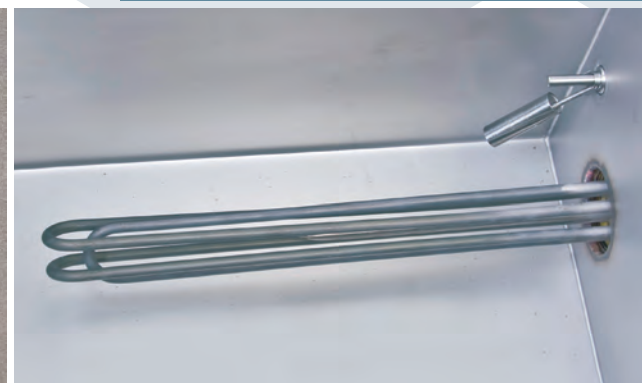
Technical specifications

- Emergency stop + On/Off switch
- Completely in Stainless Steel 3 mm with protection plate to protect you for heating element
- Heating element with capacity of 6KW
- Digital heating element to easily adjust desired temperature. (50°C is pre-set)
- Temperature range adjustable, we recommend 50° celcius
- 5 meter power supply cable (380VAC, 3 phases, zero and ground / 16 Ampere)
- Moveable because of foodgrade teflon wheels and Stainless Steel pulling bar
- 1/2" coupling with drain valve to connect suction hose of your inkpump
- 1/2" coupling to connect return hose from your doctor blade chamber
- Level switch safety for heating element



Photo's before and after cleaning. The density of the green increased dramatically after cleaning.

To all our quotations and to orders given to us are applicable our BicarBlast General Conditions. All prices in euro's. Prices do not include transport.



SHORT MANUAL

SHORT MANUAL HEATING ELEMENT

1. **Alarm LED** Diode LED diode flashes when the alarm status is detected.
2. **Heating LED** Diode LED diode lights during heating. For 3 phase units the diode flashes 1 °C before the pre-set temperature.
3. **"-" Push Button** Reduces the setting value or, if pressed for approximately 3 seconds changes the status of the controller (ON/OFF) (See diagram for more information).
4. **"+" Push Button** Increasing the setting value or, if pressed for approximately 3 seconds moves to the menu for hysteresis change (ON/OFF) (See diagram for more information).
5. **LED Display** Display the information on the current temperature, settings, alarms and the status of the controller.

MANUAL BICARBLAST "HEATING TANK"

- Fill the Heating Tank with 50 liter BioClean CIRCULATION CLEANER and 50 liter of water (1:1)
- Connect the suction hose of your ink pump to the drain valve of the Heating Tank and open the valve
- Connect the pressure side of your ink pump to the inlet of the doctor blade system
- Connect the return hose of your doctor blade system to the upper 1/2 " connection of the Heating tank. (make sure that the fluid level never comes above this connection in order to avoid foaming)
- First let the pump circulate before you switch on the heating Tank.
- Connect the plug to a (380VAC, 3-phase, 1-zero and 1-Earth) 16A fused socket
- Follow the increase of the temperature on the digital display until 50 °C is achieved. (this value of 50°C is already pre-set)
- Let the liquid circulate for at least 2 hours.
- Hereafter rinse the system with clear water and dry your anilox roll.
- Important: never switch on the heating Tank without liquid in it, or the heating element will burn!!

HEAT-UP TIME: BICARBLAST "HEATING TANK"

The heat capacity of water is 4180 Joule per kilogram per degree Celsius. Heating Tank has 129 Liter gross capacity, 100 liter is the amount you need to heat-up. $4180 \times 100 = 418000$ Joules per degree. Let's assume that the water heats-up from 20°C to 50°C, so 30 degrees should be heated. $418000 \times 30 = 12540000$ joules. (total energy required) 1 Joule = 1 W/s [Watt per second], you have so 12540 KW/sec. Power of heating element is 6.0 KW (in 1 sec he delivers 6000 joules), then it takes: $12540/6.0 = 2090$ sec. [= 34,8 min].

Note: the Heating Tank is Optional to equip with an extra heat element whereby the heating time halves.

